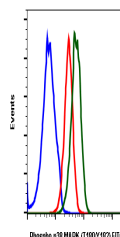


Product Datasheet

Phospho-p38 MAPK (Thr180/Tyr182) (E3) rabbit mAb FITC conjugate Antibody (orb1946348)

Description	Phospho-p38 MAPK (Thr180/Tyr182) (E3) rabbit mAb FITC conjugate Antibody
Reactivity	Human, Mouse, Rat
Conjugation	FITC
Tested Applications	FC
Immunogen	A synthetic phospho-peptide corresponding to residues surrounding Thr180/Tyr182 of human phospho p38 MAPK.
Preservatives	1X PBS, 0.09% NaN ₃ , 0.2% rAlbumin
Storage	2-8°C
Note	For research use only
Isotype	Rabbit IgGk
Clonality	Monoclonal
Uniprot ID	Q16539
Dilution Range	For flow cytometric staining, the suggested use of this reagent is 5 µL per million cells or 5 µL per 100 µL of staining volume. It is recommended that the reagent be titrated for optimal performance for each application.
Expiration Date	12 months from date of receipt.



Flow cytometric analysis of C6 cells uns...