

## Product Datasheet

# Phospho-p38 MAPK (Thr180/Tyr182) (E3) rabbit mAb SureLight488 Conjugate Antibody (orb1946346)

**Description** Phospho-p38 MAPK (Thr180/Tyr182) (E3) rabbit mAb SureLight488 Conjugate Antibody

**Reactivity** Human, Mouse

**Conjugation** SureLight 488

**Tested Applications** FC

**Immunogen** A synthetic phosphor-peptide corresponding to residues surrounding Thr180 and Tyr182 of human phospho p38MAPK

**Preservatives** 1X PBS, 0.09% NaN<sub>3</sub>, 0.2% rAlbumin

**Storage** 2-8°C

**Note** For research use only

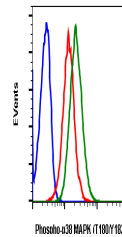
**Isotype** Rabbit IgGk

**Clonality** Monoclonal

**Uniprot ID** [Q16539](#)

**Dilution Range** For flow cytometric staining, the suggested use of this reagent is 5 µL per million cells or 5 µL per 100 µL of staining volume. It is recommended that the reagent be titrated for optimal performance for each application.

**Expiration Date** 12 months from date of receipt.



Flow cytometric analysis of C6 cells uns...