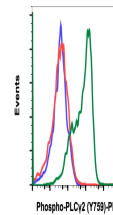


Product Datasheet

Phospho-PLC γ 2 (Tyr759) (G3) rabbit mAb PE conjugate Antibody (orb1946340)

Description	Phospho-PLC γ 2 (Tyr759) (G3) rabbit mAb PE conjugate Antibody
Reactivity	Human, Mouse
Conjugation	PE
Tested Applications	FC
Immunogen	A synthetic phospho-peptide corresponding to residues surrounding Tyr759 of human phospho PLC γ 2.
Preservatives	1X PBS, 0.09% NaN ₃ , 0.2% rAlbumin
Storage	2-8°C
Note	For research use only
Isotype	Rabbit IgGk
Clonality	Monoclonal
Uniprot ID	P16885
Dilution Range	For flow cytometric staining, the suggested use of this reagent is 5 μ L per million cells or 5 μ L per 100 μ L of staining volume. It is recommended that the reagent be titrated for optimal performance for each application.
Expiration Date	12 months from date of receipt.



Flow cytometric analysis of Ramos cells ...