
Product Datasheet

Phospho-Btk (Tyr223) (B4) rabbit mAb Antibody (orb1946336)

Description

Phospho-Btk (Tyr223) (B4) rabbit mAb Antibody

Reactivity

Human, Mouse

Conjugation

Unconjugated

Tested Applications

FC

Immunogen

A synthetic phospho-peptide corresponding to residues surrounding Tyr223 of human phospho Btk

Preservatives

1X PBS, 0.02% NaN3, 50% Glycerol, 0.1% rAlbumin

Concentration

0.5 mg/ml

Storage

-20°C

Note

For research use only

Isotype

Rabbit IgGk

Clonality

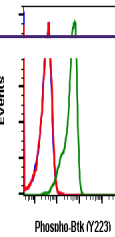
Monoclonal

Uniprot ID
[Q06187](#)
Dilution Range

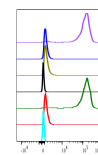
1µg/mL - 0.001µg/mL. It is recommended that the reagent be titrated for optimal performance for each application. See product image legends for additional information.

Expiration Date

12 months from date of receipt.

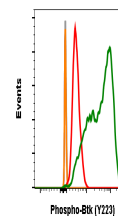


Flow cytometric analysis of U937 cells



Fluor	Treatment	Phospho-Btk (Y223)	3T3
FL1	Control	100%	100%
FL2	Control	100%	100%
FL3	Control	100%	100%
FL4	Control	100%	100%
FL5	Control	100%	100%
FL6	Control	100%	100%
FL7	Control	100%	100%
FL8	Control	100%	100%
FL9	Control	100%	100%
FL10	Control	100%	100%
FL11	Control	100%	100%
FL12	Control	100%	100%
FL13	Control	100%	100%
FL14	Control	100%	100%
FL15	Control	100%	100%
FL16	Control	100%	100%
FL17	Control	100%	100%
FL18	Control	100%	100%
FL19	Control	100%	100%
FL20	Control	100%	100%

Peptide blocking flow cytometric analysis...



Flow cytometric analysis of 3T3 cells