
Product Datasheet

**Phospho-S6 Ribosomal Protein (Ser235/236)
(R3A2) rabbit mAb Antibody (orb1946327)**

Description

Phospho-S6 Ribosomal Protein (Ser235/236)

Reactivity

Human, Mouse

Conjugation

Unconjugated

Tested Applications

FC, WB

Immunogen

A synthetic phospho-peptide corresponding to residues surrounding Ser235/236 of human phospho S6 Ribosomal Protein

Preservatives

1X PBS, 0.02% NaN3, 50% Glycerol, 0.1% rAlbumin

Concentration

0.5 mg/ml

Storage

-20°C

Note

For research use only

Isotype

Rabbit IgGk

Clonality

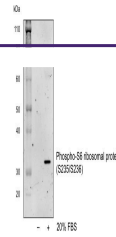
Monoclonal

Uniprot ID
P62753
Dilution Range

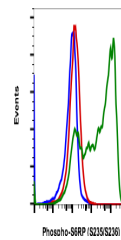
1µg/mL - 0.001µg/mL. It is recommended that the reagent be titrated for optimal performance for each application. See product image legends for additional information.

Expiration Date

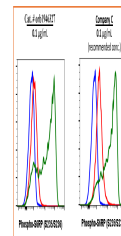
12 months from date of receipt.



Western blot analysis of NIH3T3 cell ext...



Flow cytometric analysis of U937 cells S...



Flow cytometric analysis of U937 cells, ...