
Product Datasheet

Phospho-Histone H3 (Ser10) (4B6) rabbit mAb Antibody (orb1946303)

Description

Phospho-Histone H3 (Ser10) (4B6) rabbit mAb

Reactivity

Human

Conjugation

Unconjugated

Tested Applications

FC, WB

Immunogen

A synthetic phospho-peptide corresponding to residues surrounding Ser10 of human phospho histone H3

Preservatives

1X PBS, 0.02% NaN3, 50% Glycerol, 0.1% rAlbumin

Concentration

0.5 mg/ml

Storage

-20°C

Note

For research use only

Isotype

Rabbit IgGk

Clonality

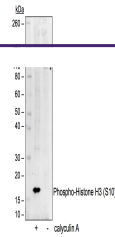
Monoclonal

Uniprot ID
Q16695
Dilution Range

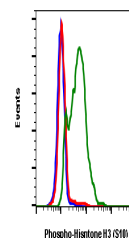
1µg/mL - 0.001µg/mL. It is recommended that the reagent be titrated for optimal performance for each application. See product image legends for additional information.

Expiration Date

12 months from date of receipt.



Western blot analysis of Jurkat cell ext...



Flow cytometric analysis of HeLa cells S...



Western blot analysis of A549 cell extra...