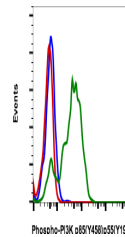


## Product Datasheet

# Phospho-PI3 Kinase p85 (Tyr458)/p55 (Tyr199) (1A11) rabbit mAb PE conjugate Antibody (orb1946297)

<b>Description</b>	Phospho-PI3 Kinase p85 (Tyr458)/p55 (Tyr199) (1A11) rabbit mAb PE conjugate Antibody
<b>Reactivity</b>	Human, Mouse
<b>Conjugation</b>	PE
<b>Tested Applications</b>	FC
<b>Immunogen</b>	A synthetic phospho-peptide corresponding to residues surrounding Tyr458 of human phospho PI3K p85
<b>Preservatives</b>	1X PBS, 0.09% NaN3, 0.2% rAlbumin
<b>Storage</b>	2-8°C
<b>Note</b>	For research use only
<b>Isotype</b>	Rabbit IgGk
<b>Clonality</b>	Monoclonal
<b>Uniprot ID</b>	<a href="#">P27986</a> , <a href="#">O00459</a> , <a href="#">Q92569</a>
<b>Dilution Range</b>	For flow cytometric staining, the suggested use of this reagent is 5 µL per million cells or 5 µL per 100 µL of staining volume. It is recommended that the reagent be titrated for optimal performance for each application.
<b>Expiration Date</b>	12 months from date of receipt.



Flow cytometric analysis of Ramos cells ...