
Product Datasheet

Phospho-Src (Tyr416) (C4) rabbit mAb Antibody (orb1946293)

Description

Phospho-Src (Tyr416) (C4) rabbit mAb Antibody


Reactivity

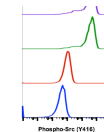
Human, Mouse

Conjugation

Unconjugated

Tested Applications

FC



Sample	Population	Median	SSC-A
CD 3 (3.1) anti-CD3	Pho-Src (P)	23170	
CD 3 (3.1) anti-CD3	Pho-Src (N)	21000	
CD 3 (3.1) anti-CD3	Pho-Src (P)	38147	
CD 3 (3.1) anti-CD3	CD3	2881	
CD 3 (3.1) anti-CD3	CD3	213	

Immunogen

A synthetic phospho-peptide corresponding to residues surrounding Tyr416 of human phospho Src

Flow cytometric analysis of U937 cells

Preservatives

 1X PBS, 0.02% Na₃N, 50% Glycerol, 0.1% rAlbumin

S...

Concentration

0.5 mg/ml

Storage

-20°C

Note

For research use only

Isotype

Rabbit IgGk

Clonality

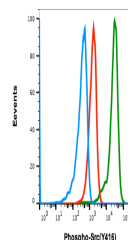
Monoclonal

Uniprot ID
[P12931](#)

Flow cytometric analysis of NIH3T3 cells...

Dilution Range

1µg/mL - 0.001µg/mL. It is recommended that the reagent be titrated for optimal performance for each application. See product image legends for additional information.


Expiration Date

12 months from date of receipt.

Flow cytometric analysis of U937 cells S...