
Product Datasheet

**Phospho-Shp2 (Tyr580) (4A2) rabbit mAb Antibody
(orb1946268)**

Description

Phospho-Shp2 (Tyr580) (4A2) rabbit mAb


Reactivity

Human, Mouse

Conjugation

Unconjugated

Tested Applications

FC

Immunogen

A synthetic phospho-peptide corresponding to residues surrounding Tyr580 of human phospho Shp2

Peptide blocking flow cytometric analysis...

Preservatives

 1X PBS, 0.02% NaN₃, 50% Glycerol, 0.1% rAlbumin

Concentration

0.5 mg/ml

Storage

-20°C

Note

For research use only

Isotype

Rabbit IgGk

Clonality

Monoclonal

Uniprot ID
[Q06124](#)
Dilution Range

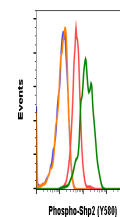
1µg/mL - 0.001µg/mL. It is recommended that the reagent be titrated for optimal performance for each application. See product image legends for additional information.

Expiration Date

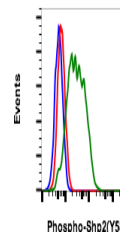
12 months from date of receipt.



| SampleID | Median | FLCA |
|------------|--------|------|
| CPK42 N | 550 | |
| CPK42 N | 361 | |
| CPK42 P | 1061 | |
| CPK42 P | 481 | |
| CPK42 | 866 | |
| CPK42 | 1467 | |
| CPK P only | 557 | |



Flow cytometric analysis of NIH3T3 cells...



Flow cytometric analysis of U937 cells S...