

Product Datasheet

Phospho-SLP-76 (Tyr128) (3F8) rabbit mAb PE conjugate Antibody (orb1946245)

Description Phospho-SLP-76 (Tyr128) (3F8) rabbit mAb PE conjugate Antibody

Reactivity Human, Mouse

Conjugation PE

Tested Applications FC

Immunogen A synthetic phospho-peptide corresponding to residues surrounding Tyr128 of human phospho SLP-76

Preservatives 1X PBS, 0.09% NaN₃, 0.2% rAlbumin

Storage 2-8°C

Note For research use only

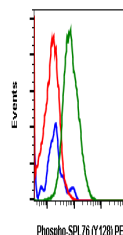
Isotype Rabbit IgGk

Clonality Monoclonal

Uniprot ID [Q13094](#)

Dilution Range For flow cytometric staining, the suggested use of this reagent is 5 µL per million cells or 5 µL per 100 µL of staining volume. It is recommended that the reagent be titrated for optimal performance for each application.

Expiration Date 12 months from date of receipt.



Flow cytometric analysis of Ramos cells ...