
Product Datasheet

**Isotype Control (G9) rabbit mAb Antibody
(orb1946241)**

Description

Isotype Control (G9) rabbit mAb Antibody

Reactivity

Other

Conjugation

Unconjugated

Tested Applications

ELISA, FC, WB

Immunogen

Keyhole limpet hemocyanin carrier protein.

Preservatives

1X PBS, 0.02% NaN3, 50% Glycerol, 0.1% rAlbumin

Concentration

0.5 mg/ml

Storage

-20°C

Note

For research use only

Isotype

Rabbit IgGk

Clonality

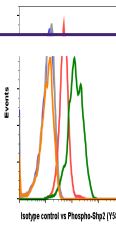
Monoclonal

Dilution Range

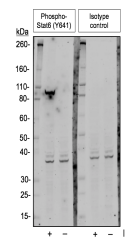
Isotype control antibodies should be used at the same concentration as the test antibody.

Expiration Date

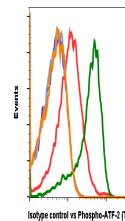
12 months from date of receipt.



KLH-G9 does not show non-specific bindin...



KLH-G9 does not show non-specific bindin...



KLH-G9 does not show non-specific bindin...