

---

## Product Datasheet

### Phospho-MKK7 (Ser271/Thr275) (R4F9) rabbit mAb Antibody (orb1946233)

**Description**

Phospho-MKK7 (Ser271/Thr275) (R4F9) rabbit

**Reactivity**

Human, Mouse, Rat

**Conjugation**

Unconjugated

**Tested Applications**

FC, WB

**Immunogen**

A synthetic phospho-peptide corresponding to residues surrounding Ser271/Thr275 of human phospho MKK7

**Preservatives**

 1X PBS, 0.02% NaN<sub>3</sub>, 50% Glycerol, 0.1% rAlbumin

**Concentration**

0.5 mg/ml

**Storage**

-20°C

**Note**

For research use only

**Isotype**

Rabbit IgGk

**Clonality**

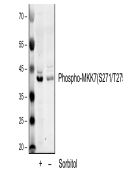
Monoclonal

**Uniprot ID**
**O14733**
**Dilution Range**

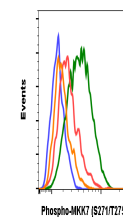
1µg/mL - 0.001µg/mL. It is recommended that the reagent be titrated for optimal performance for each application. See product image legends for additional information.

**Expiration Date**

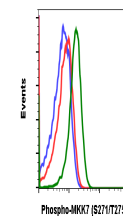
12 months from date of receipt.



Western blot analysis of THP1 cell extra...



Flow cytometric analysis of C2C12 cells ...



Flow cytometric analysis of C6 cells sec...