

---

## Product Datasheet

**Phospho-KSR1 (Ser392) (3A4) rabbit mAb  
Antibody (orb1946217)**

**Description**

Phospho-KSR1 (Ser392) (3A4) rabbit mAb

**Reactivity**

Human, Mouse

**Conjugation**

Unconjugated

**Tested Applications**

FC

**Immunogen**

A synthetic phospho-peptide corresponding to residues surrounding Ser392 of human phospho KSR1

**Preservatives**

1X PBS, 0.02% NaN3, 50% Glycerol, 0.1% rAlbumin

**Concentration**

0.5 mg/ml

**Storage**

-20°C

**Note**

For research use only

**Isotype**

Rabbit IgGk

**Clonality**

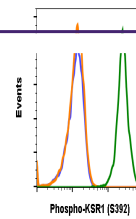
Monoclonal

**Uniprot ID**
**Q8IVT5**
**Dilution Range**

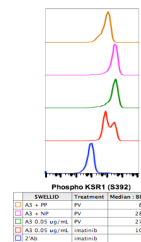
1µg/mL - 0.001µg/mL. It is recommended that the reagent be titrated for optimal performance for each application. See product image legends for additional information.

**Expiration Date**

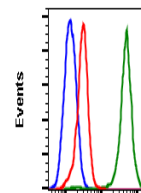
12 months from date of receipt.



KSR1S392-3A4 recognizes basal phosphoryl...



Flow cytometric analysis of K562 cells S...



Flow cytometric analysis of HeLa human a...