
Product Datasheet

**Phospho-Chk1 (Ser345) (R3F9) rabbit mAb
Antibody (orb1946212)**

Description

Phospho-Chk1 (Ser345) (R3F9) rabbit mAb

Reactivity

Human, Mouse, Rat

Conjugation

Unconjugated

Tested Applications

FC

Immunogen

A synthetic phospho-peptide corresponding to residues surrounding Ser345 of human phospho Chk1

Preservatives

1X PBS, 0.02% NaN3, 50% Glycerol, 0.1% rAlbumin

Concentration

0.5 mg/ml

Storage

-20°C

Note

For research use only

Isotype

Rabbit IgGk

Clonality

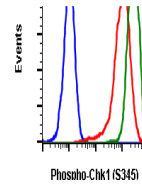
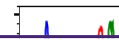
Monoclonal

Uniprot ID
[O14757](#)
Dilution Range

1µg/mL - 0.001µg/mL. It is recommended that the reagent be titrated for optimal performance for each application. See product image legends for additional information.

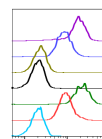
Expiration Date

12 months from date of receipt.



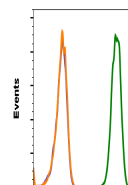
Phospho-Chk1 (S345)

Flow cytometric analysis of HeLa cells S...



SampleID	Median	Stk
Chk1 R3F9 N	17782	
Chk1 R3F9 P	1842	
Chk1 R3F9 P	2272	
Chk1 R3F9 P	2066	
Chk1 R3F9	21845	
Chk1 R3F9	2882	
Chk1 R3F9	182	

Peptide blocking flow cytometric analysis...



Phospho-Chk1 (S345)

Chk1S345-R3F9 recognizes basal phosphory...