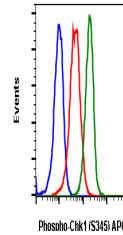


## Product Datasheet

# Phospho-Chk1 (Ser345) (R3F9) rabbit mAb APC conjugate Antibody (orb1946209)

|                            |   |
|----------------------------|---|
| <b>Description</b>         | Phospho-Chk1 (Ser345) (R3F9) rabbit mAb APC conjugate Antibody  |
| <b>Reactivity</b>          | Human, Mouse, Rat   |
| <b>Conjugation</b>         | APC   |
| <b>Tested Applications</b> | FC  |
| <b>Immunogen</b>           | A synthetic phospho-peptide corresponding to residues surrounding Ser345 of human phospho Chk1  |
| <b>Preservatives</b>       | 1X PBS, 0.09% NaN <sub>3</sub> , 0.2% rAlbumin  |
| <b>Storage</b>             | 2-8°C   |
| <b>Note</b>                | For research use only   |
| <b>Isotype</b>             | Rabbit IgGk   |
| <b>Clonality</b>           | Monoclonal  |
| <b>Uniprot ID</b>          | <a href="#">O14757</a>  |
| <b>Dilution Range</b>      | For flow cytometric staining, the suggested use of this reagent is 5 µL per million cells or 5 µL per 100 µL of staining volume. It is recommended that the reagent be titrated for optimal performance for each application. |
| <b>Expiration Date</b>     | 12 months from date of receipt.   |



Flow cytometric analysis of HeLa cells S...