

---

## Product Datasheet

### Phospho-Histone H2A.X (Ser139) (1B3) rabbit mAb Antibody (orb1946207)

**Description**

Phospho-Histone H2A.X (Ser139) (1B3) rabbit

**Reactivity**

Human, Mouse

**Conjugation**

Unconjugated

**Tested Applications**

FC, WB

**Immunogen**

A synthetic phospho-peptide corresponding to residues surrounding Ser139 of human phospho histone H2A.X.

**Preservatives**

 1X PBS, 0.02% Na<sub>3</sub>N, 50% Glycerol, 0.1% rAlbumin

**Concentration**

0.5 mg/ml

**Storage**

-20°C

**Note**

For research use only

**Isotype**

Rabbit IgGk

**Clonality**

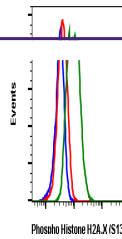
Monoclonal

**Uniprot ID**
**P16104**
**Dilution Range**

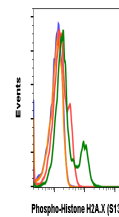
1µg/mL - 0.001µg/mL. It is recommended that the reagent be titrated for optimal performance for each application. See product image legends for additional information.

**Expiration Date**

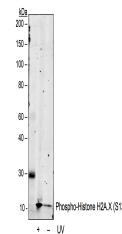
12 months from date of receipt.



Flow cytometric analysis of C2C12 cells ...



Flow cytometric analysis of 3T3 cells se...



Western blot analysis of 293T cell extra...