

---

## Product Datasheet

**Phospho-RelB (Ser552) (A7) rabbit mAb Antibody  
(orb1946198)**

**Description**

Phospho-RelB (Ser552) (A7) rabbit mAb Antibody

**Reactivity**

Human, Mouse

**Conjugation**

Unconjugated

**Tested Applications**

FC

**Immunogen**

A synthetic phospho-peptide corresponding to residues surrounding Ser552 of human phospho RelB

**Preservatives**

1X PBS, 0.02% NaN3, 50% Glycerol, 0.1% rAlbumin

**Concentration**

0.5 mg/ml

**Storage**

-20°C

**Note**

For research use only

**Isotype**

Rabbit IgGk

**Clonality**

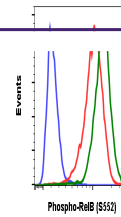
Monoclonal

**Uniprot ID**
[Q01201](#)
**Dilution Range**

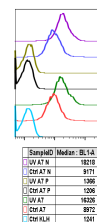
1µg/mL - 0.001µg/mL. It is recommended that the reagent be titrated for optimal performance for each application. See product image legends for additional information.

**Expiration Date**

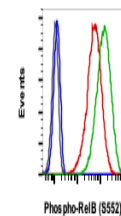
12 months from date of receipt.



Flow cytometric analysis of NIH3T3 cells...



Peptide blocking flow cytometric analysis...



Flow cytometric analysis of HeLa cells u...