

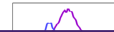
---

## Product Datasheet

**Phospho-Ship2 (Tyr1135) (1D2) rabbit mAb  
Antibody (orb1946183)**

**Description**

Phospho-Ship2 (Tyr1135) (1D2) rabbit mAb


**Reactivity**

Human, Mouse

**Conjugation**

Unconjugated

**Tested Applications**

FC

**Immunogen**

A synthetic phospho-peptide corresponding to residues surrounding Tyr1135 of human phospho Ship2

**Preservatives**

 1X PBS, 0.02% NaN<sub>3</sub>, 50% Glycerol, 0.1% rAlbumin

**Concentration**

0.5 mg/ml

**Storage**

-20°C

**Note**

For research use only

**Isotype**

Rabbit IgGk

**Clonality**

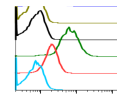
Monoclonal

**Uniprot ID**
**O15357**
**Dilution Range**

1µg/mL - 0.001µg/mL. It is recommended that the reagent be titrated for optimal performance for each application. See product image legends for additional information.

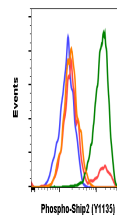
**Expiration Date**

12 months from date of receipt.

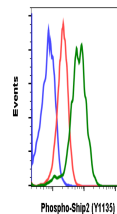


Sample	Gate	Phospho-Ship2
1	100%	100%
2	100%	100%
3	100%	100%
4	100%	100%
5	100%	100%
6	100%	100%
7	100%	100%
8	100%	100%
9	100%	100%
10	100%	100%
11	100%	100%
12	100%	100%
13	100%	100%
14	100%	100%
15	100%	100%
16	100%	100%
17	100%	100%
18	100%	100%
19	100%	100%
20	100%	100%
21	100%	100%
22	100%	100%
23	100%	100%
24	100%	100%
25	100%	100%
26	100%	100%
27	100%	100%
28	100%	100%
29	100%	100%
30	100%	100%
31	100%	100%
32	100%	100%
33	100%	100%
34	100%	100%
35	100%	100%
36	100%	100%
37	100%	100%
38	100%	100%
39	100%	100%
40	100%	100%
41	100%	100%
42	100%	100%
43	100%	100%
44	100%	100%
45	100%	100%
46	100%	100%
47	100%	100%
48	100%	100%
49	100%	100%
50	100%	100%

Peptide blocking flow cytometric analysis...



Flow cytometric analysis of C2C12 cells ...



Flow cytometric analysis of U937 cells S...