
Product Datasheet

**Phospho-Histone H2A.X (Ser139) (1E4) rabbit mAb
Antibody (orb1946178)**

Description

Phospho-Histone H2A.X (Ser139) (1E4) rabbit

Reactivity

Human, Mouse

Conjugation

Unconjugated

Tested Applications

FC, WB

Immunogen

A synthetic phospho-peptide corresponding to residues surrounding Ser139 of human phospho histone H2A.X.

Preservatives

 1X PBS, 0.02% Na₃N, 50% Glycerol, 0.1% rAlbumin

Concentration

0.5 mg/ml

Storage

-20°C

Note

For research use only

Isotype

Rabbit IgGk

Clonality

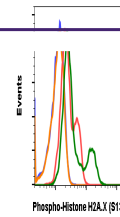
Monoclonal

Uniprot ID
P16104
Dilution Range

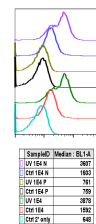
1µg/mL - 0.001µg/mL. It is recommended that the reagent be titrated for optimal performance for each application. See product image legends for additional information.

Expiration Date

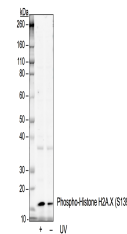
12 months from date of receipt.



Flow cytometric analysis of 3T3 cells se...



Peptide blocking flow cytometric analysi...



Western blot analysis of HEK293T cell ex...