
Product Datasheet

**Phospho-PTEN (Ser380) (NA9) rabbit mAb
Antibody (orb1946173)**

Description

Phospho-PTEN (Ser380) (NA9) rabbit mAb

Reactivity

Human, Mouse

Conjugation

Unconjugated

Tested Applications

FC

Immunogen

A synthetic phospho-peptide corresponding to residues surrounding Ser380 of human phospho PTEN

Preservatives

1X PBS, 0.02% NaN3, 50% Glycerol, 0.1% rAlbumin

Concentration

0.5 mg/ml

Storage

-20°C

Note

For research use only

Isotype

Rabbit IgGk

Clonality

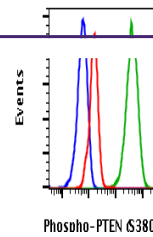
Monoclonal

Uniprot ID
P60484
Dilution Range

1µg/mL - 0.001µg/mL. It is recommended that the reagent be titrated for optimal performance for each application. See product image legends for additional information.

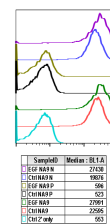
Expiration Date

12 months from date of receipt.

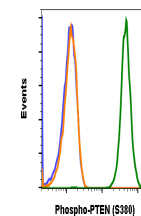


Flow cytometric analysis of A431 cells,

...



Peptide blocking flow cytometric analysis...



PTENS380-NA9 recognizes basal phosphorylation...