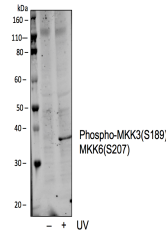


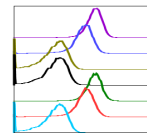
Product Datasheet

Phospho-MKK3 (Ser189)/MKK6 (Ser207) (D3) rabbit mAb Antibody (orb1946168)

Description	Phospho-MKK3 (Ser189)/MKK6 (Ser207) (D3) rabbit mAb Antibody
Reactivity	Human, Mouse
Conjugation	Unconjugated
Tested Applications	FC, WB
Immunogen	A synthetic phospho-peptide corresponding to residues surrounding Ser189 of human phospho MKK3 and Ser207 of human phospho MKK6.
Preservatives	1X PBS, 0.02% NaN3, 50% Glycerol, 0.1% rAlbumin
Concentration	0.5 mg/ml
Storage	-20°C
Note	For research use only
Isotype	Rabbit IgGk
Clonality	Monoclonal
Uniprot ID	P46734
Dilution Range	1µg/mL - 0.001µg/mL. It is recommended that the reagent be titrated for optimal performance for each application. See product image legends for additional information.
Expiration Date	12 months from date of receipt.

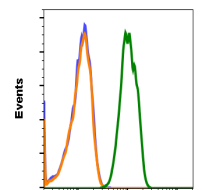


Western blot analysis of COS7 cell extra...



SampleID	Median	BL1-A
UV7 D3 N	8011	
K252 D3 N	2062	
UV7 D3 P	747	
K252 D3 P	761	
UV7 D3	4911	
K252 D3	3184	
K252 only	754	

Peptide blocking flow cytometric analysi...



Phospho-MKK3 (S189)/MKK6 (S207)

MKK3S189MKK6S207-D3 recognizes basal pho...