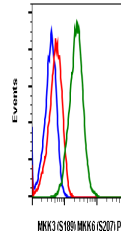


Product Datasheet

Phospho-MKK3 (S189)/MKK6 (S207) (D3) rabbit mAb PE conjugate Antibody (orb1946167)

| | |
|----------------------------|---|
| Description | Phospho-MKK3 (S189)/MKK6 (S207) (D3) rabbit mAb PE conjugate Antibody |
| Reactivity | Human, Mouse |
| Conjugation | PE |
| Tested Applications | FC |
| Immunogen | A synthetic phospho-peptide corresponding to residues surrounding Ser189 of human phospho MKK3 and Ser207 of human phospho MKK6. |
| Preservatives | 1X PBS, 0.09% NaN ₃ , 0.2% rAlbumin |
| Storage | 2-8°C |
| Note | For research use only |
| Isotype | Rabbit IgGk |
| Clonality | Monoclonal |
| Uniprot ID | P46734 |
| Dilution Range | For flow cytometric staining, the suggested use of this reagent is 5 µL per million cells or 5 µL per 100 µL of staining volume. It is recommended that the reagent be titrated for optimal performance for each application. |
| Expiration Date | 12 months from date of receipt. |



Flow cytometric analysis of HEK293T cell...