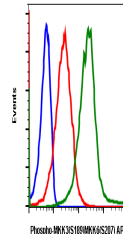


Product Datasheet

Phospho-MKK3 (S189)/MKK6 (S207) (D3) rabbit mAb APC conjugate Antibody (orb1946165)

Description	Phospho-MKK3 (S189)/MKK6 (S207) (D3) rabbit mAb APC conjugate Antibody
Reactivity	Human, Mouse
Conjugation	APC
Tested Applications	FC
Immunogen	A synthetic phospho-peptide corresponding to residues surrounding Ser189 of human phospho MKK3 and Ser207 of human phospho MKK6.
Preservatives	1X PBS, 0.09% NaN ₃ , 0.2% rAlbumin
Storage	2-8°C
Note	For research use only
Isotype	Rabbit IgGk
Clonality	Monoclonal
Uniprot ID	P46734
Dilution Range	For flow cytometric staining, the suggested use of this reagent is 5 µL per million cells or 5 µL per 100 µL of staining volume. It is recommended that the reagent be titrated for optimal performance for each application.
Expiration Date	12 months from date of receipt.



Flow cytometric analysis of HEK293T cell...