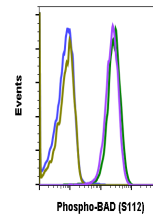


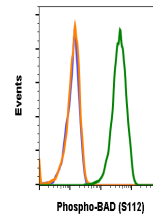
Product Datasheet

Phospho-BAD (Ser112) (B9) rabbit mAb Antibody (orb1946164)

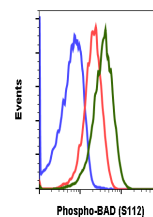
Description	Phospho-BAD (Ser112) (B9) rabbit mAb Antibody
Reactivity	Human, Mouse, Rat
Conjugation	Unconjugated
Tested Applications	FC
Immunogen	A synthetic phospho-peptide corresponding to residues surrounding Ser112 of human phospho BAD
Preservatives	1X PBS, 0.02% NaN ₃ , 50% Glycerol, 0.1% rAlbumin
Concentration	0.5 mg/ml
Storage	-20°C
Note	For research use only
Isotype	Rabbit IgGL
Clonality	Monoclonal
Uniprot ID	Q92934
Dilution Range	1µg/mL - 0.001µg/mL. It is recommended that the reagent be titrated for optimal performance for each application. See product image legends for additional information.
Expiration Date	12 months from date of receipt.



Peptide blocking flow cytometric analysis...



BADS112-B9 recognizes basal phosphorylat...



Flow cytometric analysis of U937 cells s...