
Product Datasheet

**Phospho-Chk1 (Ser317) (G1) rabbit mAb Antibody
(orb1946155)**

Description

Phospho-Chk1 (Ser317) (G1) rabbit mAb

Reactivity

Human, Mouse

Conjugation

Unconjugated

Tested Applications

FC, WB

Immunogen

A synthetic phospho-peptide corresponding to residues surrounding Ser317 of human phospho Chk1

Preservatives

 1X PBS, 0.02% NaN₃, 50% Glycerol, 0.1% rAlbumin

Concentration

0.5 mg/ml

Storage

-20°C

Note

For research use only

Isotype

Rabbit IgGκ

Clonality

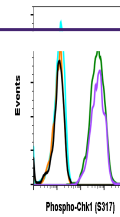
Monoclonal

Uniprot ID
O14757
Dilution Range

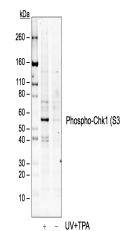
1µg/mL - 0.001µg/mL. It is recommended that the reagent be titrated for optimal performance for each application. See product image legends for additional information.

Expiration Date

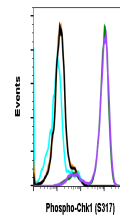
12 months from date of receipt.



Peptide blocking flow cytometric analysis...



Western blot analysis of COS7 cell extra...



Peptide blocking flow cytometric analysis...