
Product Datasheet

**Phospho-MEK1 (Ser298) (H8) rabbit mAb Antibody
(orb1946150)**

Description

Phospho-MEK1 (Ser298) (H8) rabbit mAb

Reactivity

Human, Rat

Conjugation

Unconjugated

Tested Applications

FC, WB

Immunogen

A synthetic phospho-peptide corresponding to residues surrounding Ser298 of human phospho MEK1.

Preservatives

1X PBS, 0.02% NaN3, 50% Glycerol, 0.1% rAlbumin

Concentration

0.5 mg/ml

Storage

-20°C

Note

For research use only

Isotype

Rabbit IgGk

Clonality

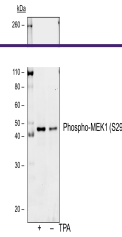
Monoclonal

Uniprot ID
[Q02750](#)
Dilution Range

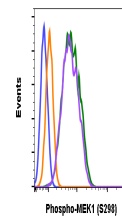
1µg/mL - 0.001µg/mL. It is recommended that the reagent be titrated for optimal performance for each application. See product image legends for additional information.

Expiration Date

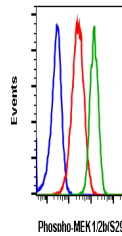
12 months from date of receipt.



Western blot analysis of C6 cell extract...



Peptide blocking flow cytometric analysis...



Flow cytometric analysis of HeLa cells S...