
Product Datasheet

Phospho-Stat1 (Ser727) (C6) rabbit mAb Antibody (orb1946146)

Description

Phospho-Stat1 (Ser727) (C6) rabbit mAb

Reactivity

Human

Conjugation

Unconjugated

Tested Applications

FC, WB

Immunogen

A synthetic phospho-peptide corresponding to residues surrounding Ser727 of human phospho Stat1

Preservatives

 1X PBS, 0.02% Na₃N, 50% Glycerol, 0.1% rAlbumin

Concentration

0.5 mg/ml

Storage

-20°C

Note

For research use only

Isotype

Rabbit IgGk

Clonality

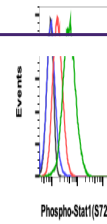
Monoclonal

Uniprot ID
P42224
Dilution Range

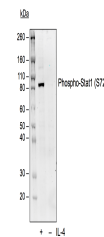
1µg/mL - 0.001µg/mL. It is recommended that the reagent be titrated for optimal performance for each application. See product image legends for additional information.

Expiration Date

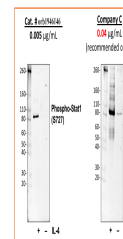
12 months from date of receipt.



Flow cytometric analysis of U937 cells u...



Western blot analysis of U937 cell extra...



Western blot analysis of U937 cell extra...