
Product Datasheet

**Phospho-MEK1/2 (Ser221) (D3) rabbit mAb
Antibody (orb1946141)**

Description

Phospho-MEK1/2 (Ser221) (D3) rabbit mAb

Reactivity

Human, Mouse

Conjugation

Unconjugated

Tested Applications

FC, WB

Immunogen

A synthetic phospho-peptide corresponding to residues surrounding Ser221 of human phospho MEK1/2.

Preservatives

 1X PBS, 0.02% NaN₃, 50% Glycerol, 0.1% rAlbumin

Concentration

0.5 mg/ml

Storage

-20°C

Note

For research use only

Isotype

Rabbit IgGk

Clonality

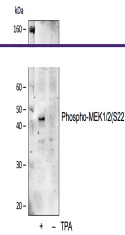
Monoclonal

Uniprot ID
P36507, Q02750
Dilution Range

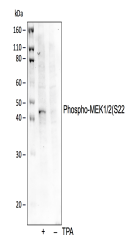
1µg/mL - 0.001µg/mL. It is recommended that the reagent be titrated for optimal performance for each application. See product image legends for additional information.

Expiration Date

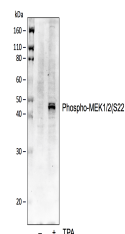
12 months from date of receipt.



Western blot analysis of HT1080 cell ext...



Western blot analysis of C2C12 cell extr...



Western blot analysis of NIH3T3 cell ext...