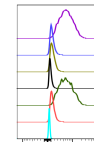


Product Datasheet

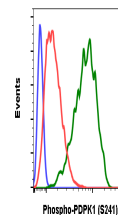
Phospho-PDK1 (Ser241) (F7) rabbit mAb Antibody (orb1946124)

Description	Phospho-PDK1 (Ser241) (F7) rabbit mAb Antibody
Reactivity	Human
Conjugation	Unconjugated
Tested Applications	FC
Immunogen	A synthetic phospho-peptide corresponding to residues surrounding Ser241 of human phospho-PDK1
Preservatives	1X PBS, 0.02% NaN ₃ , 50% Glycerol, 0.1% rAlbumin
Concentration	0.5 mg/ml
Storage	-20°C
Note	For research use only
Isotype	Rabbit IgGk
Clonality	Monoclonal
Uniprot ID	O15530
Dilution Range	1µg/mL - 0.001µg/mL. It is recommended that the reagent be titrated for optimal performance for each application. See product image legends for additional information.
Expiration Date	12 months from date of receipt.



Fluorochrome	Peptide Block	Median	SI
APC	Peptide	108	1.0
APC	PKS2	119	1.1
APC	PKS2	118	1.1
APC	PKS2	118	1.1
APC	PKS2	118	1.1
APC	PKS2	118	1.1
APC	PKS2	118	1.1
APC	PKS2	118	1.1

Peptide blocking flow cytometric analysis...



Flow cytometric analysis of 293T cells S...