

---

## Product Datasheet

**Phospho-c-Cbl (Tyr774) (R3B8) rabbit mAb  
Antibody (orb1946110)**

**Description**

Phospho-c-Cbl (Tyr774) (R3B8) rabbit mAb



SP	Transmembrane	Peptide	Block	Marker	IS11A
CD30	PE	Anti-c-Cbl			43991
CD30	PE	Anti-c-Cbl			94
CD30	PE	Phospho			25
CD30	PE	Phospho			61
CD30	PE	Phospho			7568
CD30	PE	Phospho			88
CD30	PE	Phospho			29

Peptide blocking flow cytometric analysis...

**Reactivity**

Human, Mouse

**Conjugation**

Unconjugated

**Tested Applications**

FC

**Applications**
**Immunogen**

A synthetic phospho-peptide corresponding to residues surrounding Tyr774 of human phospho c-Cbl

**Preservatives**

1X PBS, 0.02% NaN<sub>3</sub>, 50% Glycerol, 0.1% rAlbumin

**Concentration**

0.5 mg/ml

**Storage**

-20°C

**Note**

For research use only

**Isotype**

Rabbit IgGk

**Clonality**

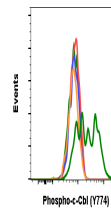
Monoclonal

**Uniprot ID**
**P22681**
**Dilution Range**

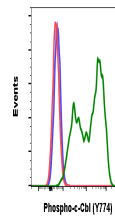
1µg/mL - 0.001µg/mL. It is recommended that the reagent be titrated for optimal performance for each application. See product image legends for additional information.

**Expiration Date**

12 months from date of receipt.



Flow cytometric analysis of 3T3 cells se...



Flow cytometric analysis of Daudi cells

...