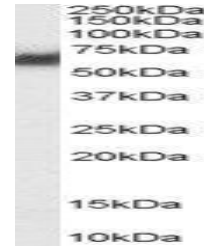


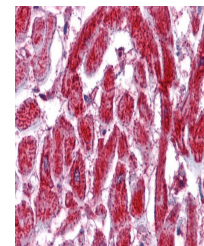
Product Datasheet

PDIA2 antibody (orb19461)

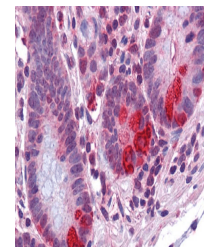
Description	Goat polyclonal antibody to PDIA2
Species/Host	Goat
Reactivity	Human, Mouse, Rat
Conjugation	Unconjugated
Tested Applications	ELISA, IHC, WB
Target	PDIA2 / PDIP
Preservatives	Supplied at 0.5 mg/ml in Tris saline, 0.02% sodium azide, pH 7.3 with 0.5% bovine serum albumin. Aliquot and store at -20°C. Minimize freezing and thawing.
Storage	Aliquot and store at -20°C. Minimize freezing and thawing.
Note	For research use only
Application notes	ELISA: Peptide ELISA: antibody detection limit dilution 1:64000.WB: Approx 60kDa band observed in Human Pancreas lysates (calculated MW of 58.2kDa according to NP_006840.2). Recommended concentration: 0.01-0.03 µg/ml.
Protein Sequence	NLETTKKYAPVD
Clonality	Polyclonal
MW	58.2
Entrez	64714
Dilution Range	ELISA: 1:64000, WB: 0.01-0.03 µg/ml, IHC-P: 3.75 µg/ml
Expiration Date	12 months from date of receipt.



orb19461 (0.03ug/ml) staining of Human P...



Immunohistochemical staining of Human He...



Immunohistochemical staining of Human Sm...