
Product Datasheet

Cleaved PARP (Asp214) (H8) rabbit mAb Antibody (orb1946095)

Analysis Reagents.

Cleaved PARP (Asp214) (H8) rabbit mAb

Reactivity

Human

Conjugation

Unconjugated

Tested Applications

FC, WB

Immunogen

A synthetic peptide corresponding to residues surrounding Asp214 of human PARP

Preservatives

 1X PBS, 0.02% NaN₃, 50% Glycerol, 0.1% rAlbumin

Concentration

0.5 mg/ml

Storage

-20°C

Note

For research use only

Isotype

Rabbit IgGk

Clonality

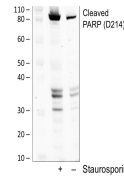
Monoclonal

Uniprot ID
P09874
Dilution Range

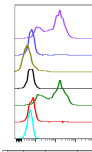
1µg/mL - 0.001µg/mL. It is recommended that the reagent be titrated for optimal performance for each application. See product image legends for additional information.

Expiration Date

12 months from date of receipt.

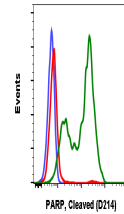


Western blot analysis of HeLa cell extra...



Fluorochrome	Peptide	Block	SSC
APC	Control peptide	5%	1500
APC	Control peptide	9%	1500
APC	PARP	2%	1500
APC	PARP	9%	1500
APC	PARP	9%	1500
APC	PARP	9%	1500

Peptide blocking flow cytometric analysis...



Flow cytometric analysis of SK.N.MC cell...