
Product Datasheet

Phospho-Btk (Tyr551) (G12) rabbit mAb Biotin conjugate Antibody (orb1946086)

Description

Phospho-Btk (Tyr551) (G12) rabbit mAb Biotin


Reactivity

Human

Conjugation

Biotin

Tested Applications

ELISA, FC

Immunogen

A synthetic phospho-peptide corresponding to residues surrounding human Btk (Y551)

Preservatives

 1X PBS, 0.09% Na₃N, 0.2% rAlbumin

Storage

2-8°C

Note

For research use only

Isotype

Rabbit IgGk

Clonality

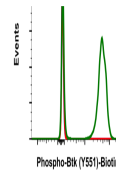
Monoclonal

Uniprot ID
[Q06187](#)
Dilution Range

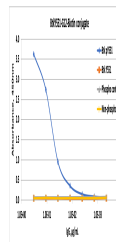
For flow cytometric staining, the suggested use of this reagent is 5 µL per million cells or 5 µL per 100 µL of staining volume. It is recommended that the reagent be titrated for optimal performance for each application.

Expiration Date

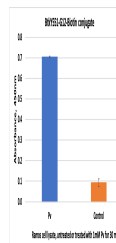
12 months from date of receipt.



Flow cytometric analysis of Ramos cells ...



Peptide ELISA using BtkY551-G12-Biotin C...



Direct ELISA using Ramos cellular lysate...