
Product Datasheet

**Phospho-SEK1/MKK4 (Ser257) (C5) rabbit mAb
Antibody (orb1946068)**

Description

Phospho-SEK1/MKK4 (Ser257) (C5) rabbit mAb

Reactivity

Human, Monkey, Mouse

Conjugation

Unconjugated

Tested Applications

FC, WB

Immunogen

A synthetic phospho-peptide corresponding to residues surrounding Ser257 of human phospho-SEK1/MKK4

Preservatives

 1X PBS, 0.02% NaN₃, 50% Glycerol, 0.1% rAlbumin

Concentration

0.5 mg/ml

Storage

-20°C

Note

For research use only

Isotype

Rabbit IgGk

Clonality

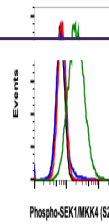
Monoclonal

Uniprot ID
P45985
Dilution Range

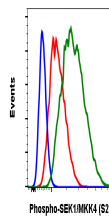
1µg/mL - 0.001µg/mL. It is recommended that the reagent be titrated for optimal performance for each application. See product image legends for additional information.

Expiration Date

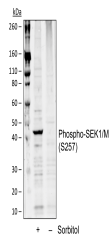
12 months from date of receipt.



Flow cytometric analysis of HEK293T cell...



Flow cytometric analysis of 3T3 cells se...



Western blot analysis of THP1 cell extra...