

---

## Product Datasheet

**Phospho-S6-Ribosomal Protein (Ser240/244)  
(CD10) rabbit mAb Antibody (orb1946064)**

**Description**

Phospho-S6-Ribosomal Protein (Ser240/244)

**Reactivity**

Human, Mouse

**Conjugation**

Unconjugated

**Tested Applications**

FC, WB

**Immunogen**

A synthetic phospho-peptide corresponding to residues surrounding Ser240/244 of human phospho S6 Ribosomal protein

**Preservatives**

1X PBS, 0.02% NaN3, 50% Glycerol, 0.1% rAlbumin

**Concentration**

0.5 mg/ml

**Storage**

-20°C

**Note**

For research use only

**Isotype**

Rabbit IgGk

**Clonality**

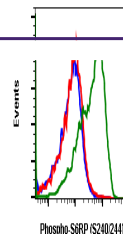
Monoclonal

**Uniprot ID**
**P62753**
**Dilution Range**

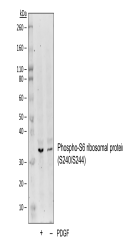
1µg/mL - 0.001µg/mL. It is recommended that the reagent be titrated for optimal performance for each application. See product image legends for additional information.

**Expiration Date**

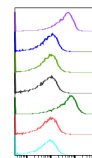
12 months from date of receipt.



Flow cytometric analysis of K562 cells, ...



Western blot analysis of NIH3T3 cells un...



SWELL	Treatment	Median SWELL
SWELL 1.1	EGF	37.5
SWELL 1.2	EGF	35.0
SWELL 1.3	EGF	31.0
SWELL 1.4	EGF	41.5
SWELL 1.5	EGF	31.0
SWELL 1.6	EGF	31.0
SWELL 1.7	EGF	31.0
SWELL 1.8	EGF	31.0
SWELL 1.9	EGF	31.0
SWELL 1.10	EGF	31.0
SWELL 1.11	EGF	31.0
SWELL 1.12	EGF	31.0
SWELL 1.13	EGF	31.0
SWELL 1.14	EGF	31.0
SWELL 1.15	EGF	31.0
SWELL 1.16	EGF	31.0
SWELL 1.17	EGF	31.0
SWELL 1.18	EGF	31.0
SWELL 1.19	EGF	31.0
SWELL 1.20	EGF	31.0
SWELL 1.21	EGF	31.0
SWELL 1.22	EGF	31.0
SWELL 1.23	EGF	31.0
SWELL 1.24	EGF	31.0
SWELL 1.25	EGF	31.0
SWELL 1.26	EGF	31.0
SWELL 1.27	EGF	31.0
SWELL 1.28	EGF	31.0
SWELL 1.29	EGF	31.0
SWELL 1.30	EGF	31.0
SWELL 1.31	EGF	31.0
SWELL 1.32	EGF	31.0
SWELL 1.33	EGF	31.0
SWELL 1.34	EGF	31.0
SWELL 1.35	EGF	31.0
SWELL 1.36	EGF	31.0
SWELL 1.37	EGF	31.0
SWELL 1.38	EGF	31.0
SWELL 1.39	EGF	31.0
SWELL 1.40	EGF	31.0
SWELL 1.41	EGF	31.0
SWELL 1.42	EGF	31.0
SWELL 1.43	EGF	31.0
SWELL 1.44	EGF	31.0
SWELL 1.45	EGF	31.0
SWELL 1.46	EGF	31.0
SWELL 1.47	EGF	31.0
SWELL 1.48	EGF	31.0
SWELL 1.49	EGF	31.0
SWELL 1.50	EGF	31.0
SWELL 1.51	EGF	31.0
SWELL 1.52	EGF	31.0
SWELL 1.53	EGF	31.0
SWELL 1.54	EGF	31.0
SWELL 1.55	EGF	31.0
SWELL 1.56	EGF	31.0
SWELL 1.57	EGF	31.0
SWELL 1.58	EGF	31.0
SWELL 1.59	EGF	31.0
SWELL 1.60	EGF	31.0
SWELL 1.61	EGF	31.0
SWELL 1.62	EGF	31.0
SWELL 1.63	EGF	31.0
SWELL 1.64	EGF	31.0
SWELL 1.65	EGF	31.0
SWELL 1.66	EGF	31.0
SWELL 1.67	EGF	31.0
SWELL 1.68	EGF	31.0
SWELL 1.69	EGF	31.0
SWELL 1.70	EGF	31.0
SWELL 1.71	EGF	31.0
SWELL 1.72	EGF	31.0
SWELL 1.73	EGF	31.0
SWELL 1.74	EGF	31.0
SWELL 1.75	EGF	31.0
SWELL 1.76	EGF	31.0
SWELL 1.77	EGF	31.0
SWELL 1.78	EGF	31.0
SWELL 1.79	EGF	31.0
SWELL 1.80	EGF	31.0
SWELL 1.81	EGF	31.0
SWELL 1.82	EGF	31.0
SWELL 1.83	EGF	31.0
SWELL 1.84	EGF	31.0
SWELL 1.85	EGF	31.0
SWELL 1.86	EGF	31.0
SWELL 1.87	EGF	31.0
SWELL 1.88	EGF	31.0
SWELL 1.89	EGF	31.0
SWELL 1.90	EGF	31.0
SWELL 1.91	EGF	31.0
SWELL 1.92	EGF	31.0
SWELL 1.93	EGF	31.0
SWELL 1.94	EGF	31.0
SWELL 1.95	EGF	31.0
SWELL 1.96	EGF	31.0
SWELL 1.97	EGF	31.0
SWELL 1.98	EGF	31.0
SWELL 1.99	EGF	31.0
SWELL 2.00	EGF	31.0

Flow cytometric analysis of K562 cells, ...