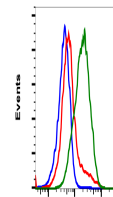


Product Datasheet

Phospho-S6-Ribosomal Protein (Ser240/244) (CD10) rabbit mAb APC Conjugate Antibody (orb1946061)

Description	Phospho-S6-Ribosomal Protein (Ser240/244) (CD10) rabbit mAb APC Conjugate Antibody
Reactivity	Human, Mouse
Conjugation	APC
Tested Applications	FC
Immunogen	A synthetic phospho-peptide corresponding to residues surrounding Ser240/244 of human phospho S6 Ribosomal protein
Preservatives	1X PBS, 0.09% NaN ₃ , 0.2% rAlbumin
Storage	2-8°C
Note	For research use only
Isotype	Rabbit IgGk
Clonality	Monoclonal
Uniprot ID	P62753
Dilution Range	For flow cytometric staining, the suggested use of this reagent is 5 µL per million cells or 5 µL per 100 µL of staining volume. It is recommended that the reagent be titrated for optimal performance for each application. See product image legends for additional information.
Expiration Date	12 months from date of receipt.



Phospho-S6RP (Ser240/244) APC

Flow cytometric analysis of K562 cells, ...