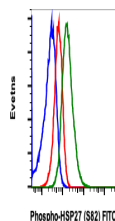


Product Datasheet

Phospho-HSP27 (Ser82) (CB2) rabbit mAb FITC conjugate Antibody (orb1946054)

| | |
|----------------------------|---|
| Description | Phospho-HSP27 (Ser82) (CB2) rabbit mAb FITC conjugate Antibody |
| Reactivity | Human, Mouse |
| Conjugation | FITC |
| Tested Applications | FC |
| Immunogen | A synthetic phospho-peptide corresponding to residues surrounding Ser82 of human phospho Hsp27 |
| Preservatives | 1X PBS, 0.09% NaN ₃ , 0.2% rAlbumin |
| Storage | 2-8°C |
| Note | For research use only |
| Isotype | Rabbit IgGk |
| Clonality | Monoclonal |
| Uniprot ID | P04792 |
| Dilution Range | For flow cytometric staining, the suggested use of this reagent is 5 µL per million cells or 5 µL per 100 µL of staining volume. It is recommended that the reagent be titrated for optimal performance for each application. See product image legends for additional information. |
| Expiration Date | 12 months from date of receipt. |



Flow cytometric analysis of HeLa cells
U...