

Product Datasheet

Phospho-Aurora A (Thr288)/Aurora B (Thr232)/Aurora C (Thr198) (CC12) rabbit mAb Antibody (orb1946052)

Description Phospho-Aurora A (Thr288)/Aurora B (Thr232)/Aurora C (Thr198) (CC12) rabbit mAb Antibody

Reactivity Human

Conjugation Unconjugated

Tested Applications FC

Immunogen A synthetic phospho-peptide corresponding to residues surrounding human Aurora A (Thr288)/Aurora B (Thr232)/Aurora C (Thr198)

Preservatives 1X PBS, 0.02% NaN3, 50% Glycerol, 0.1% rAlbumin

Concentration 0.5 mg/ml

Storage -20°C

Note For research use only

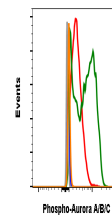
Isotype Rabbit IgGk

Clonality Monoclonal

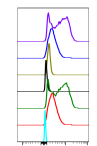
Uniprot ID [Q96GD4](#), [O14965](#), [Q9UQB9](#)

Dilution Range 1µg/mL - 0.001µg/mL. It is recommended that the reagent be titrated for optimal performance for each application. See product image legends for additional information.

Expiration Date 12 months from date of receipt.



Flow cytometric analysis of HeLa cells
S...



Cell Line	Antibody	Fluorescence Intensity
HeLa	Phospho-Aurora ABC	High
HeLa	Control	Low
HeLa	Phospho-Aurora ABC	High
HeLa	Control	Low
HeLa	Phospho-Aurora ABC	High
HeLa	Control	Low
HeLa	Phospho-Aurora ABC	High
HeLa	Control	Low

Peptide blocking flow cytometric analysis...