

## Product Datasheet

# Phospho-NFKB p65 (Ser536) (B7) rabbit mAb FITC Conjugate Antibody (orb1946046)

**Description** Phospho-NFKB p65 (Ser536) (B7) rabbit mAb FITC Conjugate Antibody

**Reactivity** Human

**Conjugation** FITC

**Tested Applications** FC

**Immunogen** A synthetic phospho-peptide corresponding to residues surrounding Ser536 of human phospho-NFKB p65

**Preservatives** 1X PBS, 0.09% NaN<sub>3</sub>, 0.2% rAlbumin

**Storage** 2-8°C

**Note** For research use only

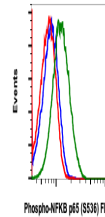
**Isotype** Rabbit IgGk

**Clonality** Monoclonal

**Uniprot ID** [Q04206](#)

**Dilution Range** For flow cytometric staining, the suggested use of this reagent is 5 µL per million cells or 5 µL per 100 µL of staining volume. It is recommended that the reagent be titrated for optimal performance for each application. See product image legends for additional information.

**Expiration Date** 12 months from date of receipt.



Flow cytometric analysis of HeLa cells u...