

---

## Product Datasheet

**Phospho-HS1 (Tyr397) (F12) rabbit mAb Antibody  
(orb1946044)**

**Description**

Phospho-HS1 (Tyr397) (F12) rabbit mAb

**Reactivity**

Human, Mouse

**Conjugation**

Unconjugated

**Tested Applications**

FC, WB

**Immunogen**

A synthetic phospho-peptide corresponding to residues surrounding Tyr397 of human phospho HS1

**Preservatives**

 1X PBS, 0.02% NaN<sub>3</sub>, 50% Glycerol, 0.1% rAlbumin

**Concentration**

0.5 mg/ml

**Storage**

-20°C

**Note**

For research use only

**Isotype**

Rabbit IgGk

**Clonality**

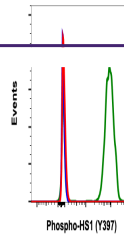
Monoclonal

**Uniprot ID**
**P14317**
**Dilution Range**

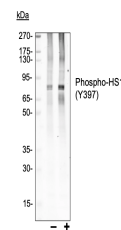
1µg/mL - 0.001µg/mL. It is recommended that the reagent be titrated for optimal performance for each application. See product image legends for additional information.

**Expiration Date**

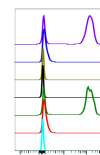
12 months from date of receipt.



Flow cytometric analysis of Ramos cells ...



Western blot analysis of Ramos cell extr...



| IgG | Treatment | Peptide Block | Median | SL%Δ |
|-----|-----------|---------------|--------|------|
| 0   | Ph        | Nonblock      | 11729  |      |
| 1   | Ph        | Nonblock      | 811    |      |
| 2   | Ph        | Phospho       | 205    |      |
| 3   | Ph        | Phospho       | 248    |      |
| 4   | Ph        | -             | 11648  |      |
| 5   | Ph        | -             | 84     |      |
| 6   | Ph        | -             | 205    |      |

Peptide blocking flow cytometric analysis...