
Product Datasheet

Phospho-c-Fos (Ser32) (BA9) rabbit mAb Antibody (orb1946027)

Description

Phospho-c-Fos (Ser32) (BA9) rabbit mAb

Reactivity

Human, Mouse, Rat

Conjugation

Unconjugated

Tested Applications

FC

Immunogen

A synthetic phospho-peptide corresponding to residues surrounding Ser32 of human phospho-c-Fos

Preservatives

1X PBS, 0.02% NaN3, 50% Glycerol, 0.1% rAlbumin

Concentration

0.5 mg/ml

Storage

-20°C

Note

For research use only

Isotype

Rabbit IgGk

Clonality

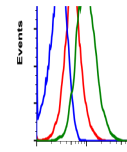
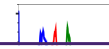
Monoclonal

Uniprot ID
P01100
Dilution Range

1µg/mL - 0.001µg/mL. It is recommended that the reagent be titrated for optimal performance for each application. See product image legends for additional information.

Expiration Date

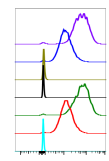
12 months from date of receipt.



Phospho-c-Fos (S32)

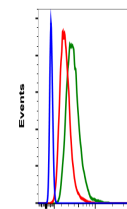
Flow cytometric analysis of HeLa cells,

...



Cell	Antibody	Phospho-c-Fos (S32)	Median	SD
HeLa	Control	Non-phospho	5473	1188
HeLa	BA9	Non-phospho	1188	1188
HeLa	Control	Phospho	100	100
HeLa	BA9	Phospho	380	100
HeLa	Control	-	100	100
HeLa	BA9	-	100	100
HeLa	Control	-	100	100
HeLa	BA9	-	100	100

Peptide blocking flow cytometric analysis...



Phospho-c-Fos (S32)

Flow cytometric analysis of L929 cells,

...