

---

## Product Datasheet

**Phospho-MCM2 (Ser139) (B12) rabbit mAb  
Antibody (orb1946023)**

**Description**

Phospho-MCM2 (Ser139) (B12) rabbit mAb

**Reactivity**

Human, Mouse, Rat

**Conjugation**

Unconjugated

**Tested Applications**

FC, WB

**Immunogen**

A synthetic phospho-peptide corresponding to residues surrounding Ser139 of human phospho MCM2

**Preservatives**

 1X PBS, 0.02% NaN<sub>3</sub>, 50% Glycerol, 0.1% rAlbumin

**Concentration**

0.5 mg/ml

**Storage**

-20°C

**Note**

For research use only

**Isotype**

Rabbit IgGk

**Clonality**

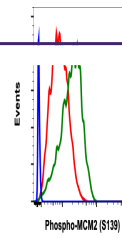
Monoclonal

**Uniprot ID**
**P49736**
**Dilution Range**

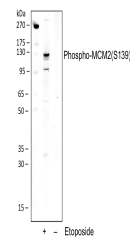
1µg/mL - 0.001µg/mL. It is recommended that the reagent be titrated for optimal performance for each application. See product image legends for additional information.

**Expiration Date**

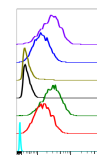
12 months from date of receipt.



Flow cytometric analysis of C6 cells, se...



Western blot analysis of L929 cell extra...



lgG	Treatment	Peptide Block	Median	St.A.
1002	Star	None	2670	
1002	Ctrl	None	1230	
1002	Star	Phospho	3240	
1002	Ctrl	Phospho	2300	
1002	Star	-	2850	
1002	Ctrl	-	1540	
1002	Ctrl	-	280	

Peptide blocking flow cytometric analysi...