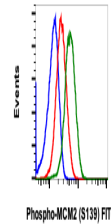


Product Datasheet

Phospho-MCM2 (Ser139) (B12) rabbit mAb FITC conjugate Antibody (orb1946021)

Description	Phospho-MCM2 (Ser139) (B12) rabbit mAb FITC conjugate Antibody
Reactivity	Human, Mouse, Rat
Conjugation	FITC
Tested Applications	FC
Immunogen	A synthetic phospho-peptide corresponding to residues surrounding Ser139 of human phospho MCM2
Preservatives	1X PBS, 0.09% NaN ₃ , 0.2% rAlbumin
Storage	2-8°C
Note	For research use only
Isotype	Rabbit IgGk
Clonality	Monoclonal
Uniprot ID	P49736
Dilution Range	For flow cytometric staining, the suggested use of this reagent is 5 µL per million cells or 5 µL per 100 µL of staining volume. It is recommended that the reagent be titrated for optimal performance for each application. See product image legends for additional information.
Expiration Date	12 months from date of receipt.



Flow cytometric analysis of C6 cells, un...