

---

## Product Datasheet

### Phospho-MARCKS (Ser167/170) (C9) rabbit mAb Antibody (orb1946011)

**Description**

Phospho-MARCKS (Ser167/170) (C9) rabbit

**Reactivity**

Human, Mouse, Rat

**Conjugation**

Unconjugated

**Tested Applications**

FC, WB

**Immunogen**

A synthetic phospho-peptide corresponding to residues surrounding Ser167/170 of human phospho MARCKS

**Preservatives**

 1X PBS, 0.02% NaN<sub>3</sub>, 50% Glycerol, 0.1% rAlbumin

**Concentration**

0.5 mg/ml

**Storage**

-20°C

**Note**

For research use only

**Isotype**

Rabbit IgGk

**Clonality**

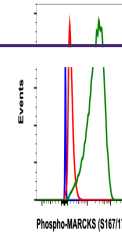
Monoclonal

**Uniprot ID**
**P29966**
**Dilution Range**

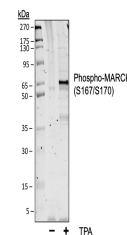
1µg/mL - 0.001µg/mL. It is recommended that the reagent be titrated for optimal performance for each application. See product image legends for additional information.

**Expiration Date**

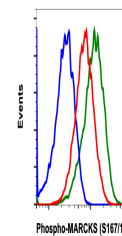
12 months from date of receipt.



Flow cytometric analysis of C6 cells, se...



Western blot analysis of NIH3T3 cell ext...



Flow cytometric analysis of 293T cells, ...