
Product Datasheet

**Phospho-NPM (Ser4) (A1) rabbit mAb Antibody
(orb1945998)**

Description

Phospho-NPM (Ser4) (A1) rabbit mAb Antibody

Reactivity

Human

Conjugation

Unconjugated

Tested Applications

FC, WB

Immunogen

A synthetic phospho-peptide corresponding to residues surrounding Ser4 of human phospho-NPM

Preservatives

 1X PBS, 0.02% Na₃N, 50% Glycerol, 0.1% rAlbumin

Concentration

0.5 mg/ml

Storage

-20°C

Note

For research use only

Isotype

Rabbit IgGk

Clonality

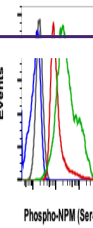
Monoclonal

Uniprot ID
P06748
Dilution Range

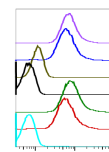
1µg/mL - 0.001µg/mL. It is recommended that the reagent be titrated for optimal performance for each application. See product image legends for additional information.

Expiration Date

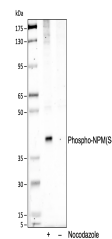
12 months from date of receipt.



Flow cytometric analysis of C6 cells untreated...



Peptide blocking flow cytometric analysis...



Western blot analysis of extract from He...