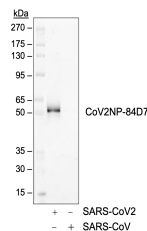


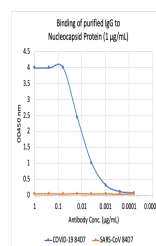
## Product Datasheet

# SARS-CoV-2 NP (84D7) rabbit mAb Antibody (orb1945988)

<b>Description</b>	SARS-CoV-2 NP (84D7) rabbit mAb Antibody
<b>Reactivity</b>	Other
<b>Conjugation</b>	Unconjugated
<b>Tested Applications</b>	ELISA
<b>Immunogen</b>	SARS-CoV-2 nucleoprotein (NP) specific peptide
<b>Preservatives</b>	1X PBS, 0.02% NaN3
<b>Concentration</b>	0.5 mg/ml
<b>Storage</b>	2-8°C
<b>Note</b>	For research use only
<b>Isotype</b>	Rabbit IgGk
<b>Clonality</b>	Monoclonal
<b>Uniprot ID</b>	<b>P0DTC9</b>
<b>Dilution Range</b>	Used for specific, high-sensitivity detection of SARS-CoV-2 nucleocapsid protein (NP) in immunoassay. Can be paired with other NP-specific clones for detection in sandwich ELISA format.
<b>Expiration Date</b>	12 months from date of receipt.



Western blot analysis of SARS-CoV2 and S...



Microtiter wells were coated with SARS-C...

Clone	$K_D$ (nM)	$K_{1/2}$ (nM)	$K_{1/2}$ (µg)
756a	$0.29 \times 10^{-11}$	$1.36 \times 10^3$	$1.12 \times 10^3$
84C4a	$9.38 \times 10^{-12}$	$1.55 \times 10^3$	$1.45 \times 10^3$
84D7	$2.28 \times 10^{-11}$	$7.45 \times 10^2$	$1.66 \times 10^3$

Affinity measurement of SARS-COV-2 antib...