
Product Datasheet

LTBP4 antibody (orb19458)

Description

LTBP4 antibody

Species/Host

Rabbit

Reactivity

Human, Mouse, Rat

Conjugation

Unconjugated

Tested Applications

ICC, IF, IHC-P, WB

Immunogen

KLH conjugated synthetic peptide derived from human LTBP4. Please contact us for the exact immunogen sequence. The peptide is available as orb393967.

Target

LTBP4

Form/Appearance

10 mM PBS, 0.02% sodium azide

Concentration

- 100 µg (in 200 µl): 0.5 mg/ml- 200 µg (in 400 µl): 0.5 mg/ml

Storage

Store at 4°C for up to two weeks. For long term storage, aliquot and store at -20°C, avoid freeze/thaw cycles.

Note

For research use only

Isotype

IgG

Clonality

Polyclonal

Purity

Polyclonal antibodies are purified by peptide affinity chromatography

MW

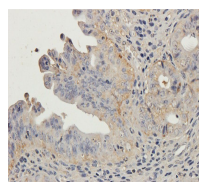
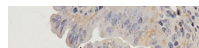
173 kDa

Uniprot ID
[P10683](#)
NCBI
[015973](#), [057057](#)
Entrez
[51083](#)
Dilution Range

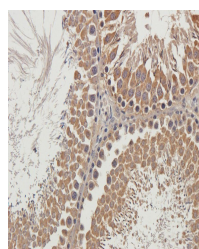
IF/ICC: 1:100-500, IHC-P: 1:100-500, WB: 1:200-600

Expiration Date

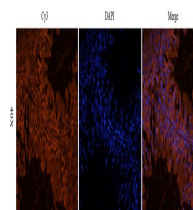
12 months from date of receipt.



IHC-P image of mouse uterus tissue using...



IHC-P image of rat testis tissue using a...



Immunofluorescence analysis of rat testis...