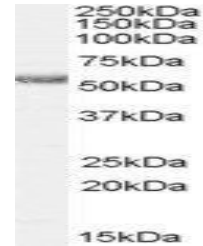


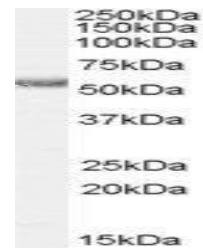
Product Datasheet

HRH1 antibody (orb19456)

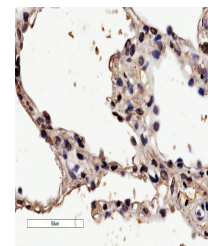
Description	Goat polyclonal antibody to HRH1
Species/Host	Goat
Reactivity	Human
Conjugation	Unconjugated
Tested Applications	ELISA, IHC, WB
Target	Histamine receptor H1(internal)
Preservatives	Supplied at 0.5 mg/ml in Tris saline, 0.02% sodium azide, pH 7.3 with 0.5% bovine serum albumin. Aliquot and store at -20°C. Minimize freezing and thawing.
Storage	Aliquot and store at -20°C. Minimize freezing and thawing.
Note	For research use only
Application notes	ELISA: Peptide ELISA: antibody detection limit dilution 1:16000.IHC: In paraffin embedded Human Lung shows membranous staining of epithelial cells in tertiar bronchus and in alveoli. Recommended concentration, 2-4µg/ml..WB: Approx 55kDa band observed in Human Heart lysates (calculated MW of 55.8kDa according to NP_000852.1). Recommended concentration: 0.5-1.5 µg/ml.
Protein Sequence	QQTSVRREDKCETD
Clonality	Polyclonal
MW	55.8
Entrez	3269
Dilution Range	ELISA: 1:16000, WB: 0.5-1.5 µg/ml, IHC-P: 2-4µg/ml
Expiration Date	12 months from date of receipt.



orb19456 (0.5ug/ml) staining of Human He...



Western blot analysis of human Heart lys...



Immunohistochemical staining of human Lu...