
Product Datasheet

TMED10 antibody (orb19451)

Description

Goat polyclonal antibody to TMED10

Species/Host

Goat

Reactivity

Bovine, Canine, Human, Mouse, Rat

Conjugation

Unconjugated

Tested

ELISA, FC, IF

Applications
Target

TMP21 / TMED10

Preservatives

Supplied at 0.5 mg/ml in Tris saline, 0.02% sodium azide, pH 7.3 with 0.5% bovine serum albumin. Aliquot and store at -20°C. Minimize freezing and thawing.

Storage

Aliquot and store at -20°C. Minimize freezing and thawing.

Note

For research use only

Application notes

ELISA: Peptide ELISA: antibody detection limit dilution 1:1000. WB: Preliminary experiments gave an approx 75kDa band in Human and Rat Pancreas lysates after 1 µg/ml antibody staining. Please note that currently we cannot find an explanation in the literature for the band we observe given the calculated size of 25.0kDa according to NP_006818.3. The 75kDa band was successfully blocked by incubation with the immunizing peptide. We would appreciate any feedback from people in the field - have any results been reported with other antibodies/lysates Have any further splice variants/modified forms been reported

Protein Sequence

YLRRFFKAKKLIE

Clonality

Polyclonal

MW

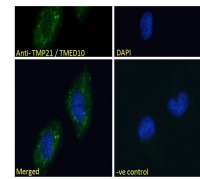
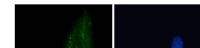
25

Entrez
[10972](#)
Dilution Range

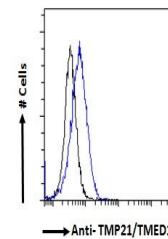
ELISA: 1:1000, WB: 1 µg/ml, IHC-P: 10ug/ml

Expiration Date

12 months from date of receipt.



Immunofluorescence analysis of U251 cell...



→ Anti-TMP21/TMED10

Flow cytometric analysis of HeLa cells u...