
Product Datasheet

BMR1A antibody (orb19450)

Description

BMR1A antibody

Species/Host

Rabbit

Reactivity

Human, Mouse, Rat

Conjugation

Unconjugated

Tested

IHC-P, WB

Applications
Immunogen

KLH conjugated synthetic peptide derived from human BMR1A. Please contact us for the exact immunogen sequence. The peptide is available as orb393966.

Target

BMR1A

Form/Appearance

10 mM PBS, 0.02% sodium azide

Concentration

- 100 µg (in 200 µl): 0.5 mg/ml- 200 µg (in 400 µl): 0.5 mg/ml

Storage

Store at 4°C for up to two weeks. For long term storage, aliquot and store at -20°C, avoid freeze/thaw cycles.

Note

For research use only

Isotype

IgG

Clonality

Polyclonal

Purity

Polyclonal antibodies are purified by peptide affinity chromatography

MW

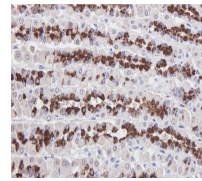
60 kDa

Uniprot ID
[P10683](#)
NCBI
[015973](#), [057057](#)
Entrez
[51083](#)
Dilution Range

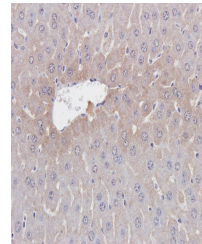
WB: 1-200-1000, IHC-P: 1:100-500

Expiration Date

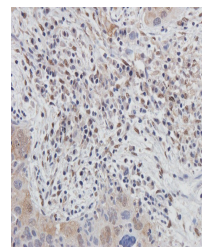
12 months from date of receipt.



IHC-P staining of rat stomach tissue usi...



IHC-P staining of rat liver tissue using...



Immunohistochemical staining of human lu...